

WINDA

WINDA

2020 TYRE CATALOGUE

**Passenger Car
SUV and Light Truck**



SHANDONG WANDA BOTO TYRE CO., LTD

WWW.BOTOTYRE.COM
ADDRESS:NO.77 TONGXING ROAD,KENLI
DISTRICT ,DONGYING CITY,SHANDONG
PROVINCE.CHINA 257506
TEL:+86-546-2896916
+86-546-2368887
FAX:+86-546-2896955





Shandong Wanda Boto Tyre Co.,LTD is one of the large enterprises in China that specializes in manufacturing TBR, OTR, PCR and light truck tires. The company employs over 3600 staff among which more than 30% are granted with colleague degree or above. Located in the beautiful Yellow river estuary-Dongying, the company is a wholly-owned subsidiary of China Wanda Group, a national key high and new-tech enterprise which through 30 years' sustainable development has become a large enterprise group with 80 billion RMB of total assets, 6 million square meters land coverage, over 13000 staff and 4 major industries including chemicals, tires, cables and real estate development; and boasts a national technology center, national post-doctoral R&D workstation and 2 national laboratories, thus growing into a diversified international and modern group with chemical as leading industry, tire and cable industry as support, real estate as well as construction and installation industry as wings and capital operation as center. China Wanda Group is also in the list of China Top 500 enterprise, China Top 500 manufacturing enterprise as well as China Top 500 of Competent large enterprise group. Besides, the group has jointly invested or established business relations with world's Top 500 enterprises like SINOPEC, CNPC (China National Petroleum Corporation).



Belt cutting machine made by Germany FISCHER



Apex assembling machine made by Netherland VMI



One stage Netherland VMI building machine



Tri-extruder made by Germany KRUPP



Steel cord calendar from Italy RUDOLF



Six-position bead ring building machine from USA BATEL

Wanda Group's 7 major series products are involved in drafting and finalizing the technical and test standard of their sectors in China; and Wanda Chemical products is awarded the Chinese Famous Brand, WINDA BOTO brand Tyre and Wanda Cable are awarded the Chinese Famous Trademark of which products are sold to more than 160 countries and regions globally.

As one of the pillar industries of Wanda Group, Wanda Boto tire company invested many famous brand and first-class manufacture, test and inspection equipment from USA, Germany, Italy, Japan and Netherlands with annual production capacity of 3 million unit of TBR, 15 million unit of PCR and 100,000 unit of OTR. The company introduces a complete technology innovation, products development and quality guarantee system and is the leader to develop new tire product in the tire industry. At present, all the tire products have been successfully approved by CCC, TS16949, ISO9001, DOT, ECE, GCC, INMETRO, ISO14001 and are sold nationwide and to 168 countries and regions in the world, thus ranking 35th among the world top 75 tire enterprises and is awarded "China Quality Integrity Enterprise" and "Foreign Trade Advanced Unit".



PCR TYRE GUIDE BOOK



03目录.tif
 类型: TIF 文件
 大小: 120 MB
 尺寸: 5031 x 3437 像素

SHANDONG WANDA BOTO TYRE CO., LTD
 WWW.BOTOTYRE.COM
 ADDRESS:NO.77 TONGXING ROAD,KENLI
 DISTRICT,DONGYING CITY,SHANDONG
 PROVINCE,CHINA
 TEL:+86-546-2896916/2368887
 FAX:+86-546-2896955



CONTENTS

- 05-06 **RUN FLAT TYRE**
ZR01
- 07-14 **ULTRA HIGH PERFORMANCE**
WH20 WH19 WH18 WH16
- 15-22 **PASSENGER**
WP15 WP16 WP17 WP18
- 23-34 **SUV/LTR**
WV11 WV11+ WH15 WL16 WA80+ WM81
- 35-38 **COMMERCIAL LTR**
WL15 WR01
- 39-40 **STR**
WL11
- 41-46 **WINTER TYRE**
IS66 IS68 IS69



RUN FLAT TYRE



ZR01

SPECIAL FOR HIGH-END CAR



Adopt solid rib design, improve the turning performance of high speed driving, improve the driving stability and safety.



Adopt asymmetric four main groove design. Superior drainage performance, improve wetland control performance, excellent driving performance on wet slippery road in rainy days.



Design of pitch width. Uniform pitch size, long-term static performance can be maintained to ensure consistent wear of new and after use tires.



Due to the application of the side wall strengthening technology, when the tires lose air, it can also give the vehicle strong support to ensure the safety of driving.



Ordinary tires are completely supported by air pressure. When the tires lose air, the wheels will have severe friction with the tires and be damaged, which will bring serious safety risks to the vehicles.

SIZE	Load Index	Speed Rating	Standard Rim	Section Width (mm)	Overall Diameter (mm)	Max. Load		Max. Pressure		Tread Depth (mm)	U.T.Q.G
						kg	lbs	kpa	psi		
• 225/50R17	94	W	7.0J	233	658	670	1477	300	44	7.9	420AA
225/55RF17	97	W	7.0J	233	680	730	1609	300	44	7.9	420AA
245/45ZRF18	96	W	8.0J	243	677	710	1595	300	44	7.9	420AA
• 235/55R18	100	V	7.5J	245	715	800	1784	300	44	7.9	420AA
• 245/50R18	100	W	7.5J	253	703	800	1784	300	44	7.9	420AA
• 255/50R18	103	W	8.0J	255	739	875	1923	300	44	7.9	420AA

• under development



WH20

SPECIAL FOR SPORT CAR



Adopt sports profile with maximum rigidity and aggressive appearance.



Big shoulder block pattern with big sipes can avoid uneven wear and effectively reduce the heating up and resonance.



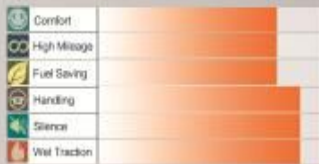
Asymmetric tread design and low rolling resistance provides excellent handling performance and outstanding driving properties on dry & wet road surfaces

SIZE	Load Index	Speed Rating	Standard Rim	Section Width (mm)	Overall Diameter (mm)	Max.load		Max.pressure		Tread Depth (mm)	U.T.Q.G
						kg	lbs	kpa	psi		
265/40R22	105	V	9"J	271	771	950	2094	340	49	8.0	420AA
265/30ZP22	97	W	9"J	271	719	730	1600	340	49	8.0	420AA
285/35ZR22	106	W	10J	230	759	950	2094	340	49	8.0	420AA
305/35R24	112	V	11J	313	824	1120	2469	340	49	8.0	420AA



WH19

SPECIAL FOR SPORT CAR



Densely distributed blocks efficiently offset noises made by air emission in the grooves.



Four longitudinal groove design to ensure good drainage performance on wet surface



Widen central Pattern Rib to ensure the handling at the time of intense driving.



Optimal design of pattern order with changing pitches efficiently decreases vibrate and noise



Use the leading method FEA, Finite Element Analysis, and get a optimized pitch arrangement and displacement.

SIZE	Load Index	Speed Rating	Standard Rim	Section Width (mm)	Overall Diameter (mm)	Max. Load kg lbs	Max. pressure kpa psi	Tread Depth (mm)	U.T.Q.G
225/35ZR20	90	W	8J	230	666	600 1323	340	49	8.0 420AA
245/30ZR22	92	W	8.5J	245	707	630 1389	340	49	8.0 420AA
255/35ZR20	97	W	9J	260	688	730 1609	340	49	8.0 420AA
265/35R22	102	V	9.5J	271	745	850 1874	340	49	8.0 420AA
275/40ZR20	100	W	9.5J	278	728	950 2094	340	49	8.0 420AA
305/40R22	114	V	11J	313	803	1180 2601	340	49	8.0 420AA
305/45R22	118	V	10J	303	893	1320 2910	340	49	8.0 420AA

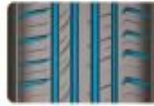


WH18

SPECIAL FOR MIDDLE AND HIGH-END CAR



Asymmetric pattern, big shoulder block, excellent control on dry road, wide grooves helps excellent water drainage.



Wider lateral grooves design helps improve the performance of drainage and wet grip.

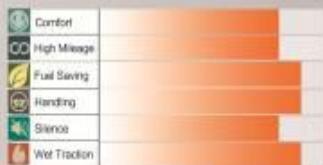
SIZE	Load Index	Speed Rating	Standard Rim	Section Width (mm)	Overall Diameter (mm)	Max. load		Max. pressure		Tread Depth (mm)	U.T.Q.G
						kg	lbs	kpa	psi		
175/65R14	82	H	5J	177	584	475	1047	300	44	7.7	420AA
175/65R14	95	T	5J	177	584	830	1168	340	49	7.7	420AA
195/65R15	91	H	6J	201	635	615	1356	300	44	7.9	420AA
195/65R15	95	H	6J	201	635	890	1521	340	49	7.9	420AA
195/60R15	85	V	6J	201	615	560	1236	300	44	7.9	420AA
205/60R15	91	H	6J	209	627	615	1356	300	44	7.9	420AA
205/65R15	94	H	6J	209	647	670	1477	300	44	7.9	420AA
205/70R15	90	T	6J	209	669	710	1566	300	44	7.9	420AA
215/65R15	96	H	6 1/2J	221	661	710	1565	300	44	7.9	420AA
195/60R16	89	H	6J	201	640	580	1279	300	44	7.9	420AA
205/50R16	87	V	6 1/2J	214	612	545	1201	300	44	7.9	420AA
205/55R16	91	V	6 1/2J	214	632	615	1356	300	44	7.9	420AA
205/55R16	91	W	6 1/2J	214	632	615	1356	300	44	7.9	420AA
205/60R16	92	H	6J	209	652	630	1389	300	44	7.9	420AA
205/65R16	95	H	6J	209	672	690	1521	300	44	7.9	420AA
215/55R16	97	W	7J	226	642	730	1611	340	49	7.9	420AA
215/60R16	95	H	6 1/2J	221	664	690	1521	300	44	7.9	420AA
215/65R16	99	H	6 1/2J	221	696	750	1654	300	44	7.9	420AA
225/55R16	95	W	7J	233	654	690	1521	300	44	7.9	420AA
225/60R16	95	V	6 1/2J	228	675	750	1653	300	44	7.9	420AA
235/60R16	100	H	7J	240	696	800	1763	300	44	7.9	420AA
195/55R16	87	V	6.0J	201	620	545	1201	300	44	7.9	420AA
205/45R16	87	V	7.0J	206	690	545	1201	340	49	7.9	420AA
205/55R17	94	V	6.5J	214	656	670	1477	340	49	7.9	420AA
245/45R17	99	W	8.0J	243	652	775	1708	340	49	7.9	420AA
215/50R17	94	W	7 1/2J	225	694	670	1478	340	49	7.9	420AA
215/60R17	92	W	8J	230	637	630	1389	340	49	7.9	420AA
225/45ZR17	94	W	8J	236	699	670	1477	300	44	7.9	420AA
225/45ZR17	97	V	7 1/2J	245	693	730	1609	300	44	7.9	420AA
225/40ZR18	95	W	8 1/2J	248	680	690	1521	340	49	7.9	420AA
235/45ZR18	100	V	7 1/2J	245	715	800	1763	300	44	7.9	420AA
235/50R18	87	V	6.0J	201	620	545	1201	300	44	7.9	420AA
235/55R18	99	W	8.0J	243	652	775	1708	340	49	7.9	420AA
225/60R18	100	H	6.5J	228	727	800	1763	300	44	7.9	420AA
215/50R18	92	W	7.0J	225	673	630	1389	300	44	7.9	420AA
215/55R18	99	H	7.0J	226	693	690	1521	300	44	7.9	420AA
225/50R18	99	W	7.0J	233	683	775	1709	340	49	7.9	420AA
225/55R18	95	H	7.5J	233	705	750	1653	300	44	7.9	420AA
245/50R18	104	V	7.5J	253	703	900	1984	340	49	7.9	420AA
255/45R18	103	W	8.5J	255	687	672	1509	340	49	7.9	420AA
235/50R19	95	V	7.5J	245	719	775	1708	300	44	7.9	420AA
235/35R19	91	W	8.5J	241	647	615	1356	340	49	7.9	420AA
255/45R19	104	W	8.5J	255	713	900	1984	340	49	7.9	420AA
225/45R19	95	W	7.5J	225	695	710	1565	340	49	7.9	420AA
245/45R19	102	W	8.0J	243	703	850	1874	340	49	7.9	420AA
255/40R19	100	W	9.0J	260	697	800	1764	340	49	7.9	420AA
245/35ZR20	95	W	8.5J	248	680	690	1521	340	49	7.9	420AA

* : under development



WH16

SPECIAL FOR HIGH-END CAR



Asymmetric pattern design provide a strong grip and confident maneuvering and tread even wearing during turning.



Four wide longitudinal groove design and wide contact patch helps to deliver a high speed performance and excellent water drainage.



Angular sipes help reduce noise and provide comfortable riding.



Special tread ingredient design with Silicon helps to provide a good grip both on dry and wet road. Longer mileage.

SIZE	Load Index	Speed Rating	Standard Rim	Section Width (mm)	Overall Diameter (mm)	Max.load		Max.pressure		Tread Depth (mm)	U.T.Q.B
						kg	lbs	kpa	psi		
195/50R15	82	V	6J	201	577	475	1047	350	51	7.9	420AA
185/55R15	82	V	6J	194	585	475	1047	350	51	7.9	420AA
195/55R15	85	V	6J	201	595	515	1135	350	51	7.9	420AA
205/50R16	87	V	6.5J	214	612	545	1201	350	51	7.9	420AA
215/55R16	97	W	7J	225	642	730	1630	340	50	7.9	420AA
225/55R16	95	W	7J	233	654	690	1521	350	51	7.9	420AA
195/50R16	88	V	6J	201	602	560	1235	340	50	7.9	420AA
225/55R17	101	W	7J	233	680	820	1819	340	50	7.9	420AA
205/40R17	84	W	7J	212	595	500	1102	350	51	7.9	420AA
215/40R17	87	W	7.5J	218	604	545	1201	350	51	7.9	420AA
215/45R17	91	W	7J	213	625	615	1356	340	50	7.9	420AA
225/45R17	91	W	7.5J	225	634	615	1356	350	51	7.9	420AA
235/45R17	97	W	8J	230	644	730	1609	340	50	7.9	420AA
205/50R17	93	W	6.5J	214	638	650	1439	340	50	7.9	420AA
225/50R17	96	W	7J	233	658	750	1653	340	50	7.9	420AA
235/50R17	95	W	7.5J	245	668	710	1565	350	51	7.9	420AA
215/55R17	96	W	7J	225	668	750	1653	340	50	7.9	420AA
225/55R17	99	W	7.5J	230	690	775	1709	350	51	7.9	420AA
225/45R18	95	W	7.5J	241	659	615	1356	350	51	7.9	420AA
225/40R18	92	W	8J	243	637	630	1389	340	50	7.9	420AA
235/40R18	95	W	8.5J	218	645	690	1521	350	51	7.9	420AA
245/45R18	100	W	8J	248	677	800	1764	350	51	7.9	420AA
215/35R18	84	W	7.5J	248	607	500	1102	350	51	7.9	420AA
245/40R18	97	W	8.5J	201	653	730	1609	350	51	7.9	420AA
245/35R20	95	W	8.5J	233	680	690	1521	340	50	7.9	420AA



WP15

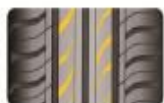
ECONOMIC CAR TYRE



Big shoulder block pattern with small sipes can avoid uneven wear and effectively reduce the heating up and resonance.



Continuous longitudinal groove design for excellent water drainage, so provide good grip and maneuvering on wet road.



Lateral small sipes design enhance the maneuvering performance.



Use the FEA, Finite Element Analysis, and get a optimized pitch arrangement, displacement to reduce noise.

SIZE	Load Index	Speed Rating	Standard Rim	Section Width (mm)	Overall Diameter (mm)	Max. Load		Max. pressure		Tread Depth (mm)	U.T.Q.G
						kg	lbs	kpa	psi		
175/60R13	77	T	5J	177	540	412	908	300	44	7.7	380AA
165/65R13	77	T	5.00B	170	544	412	908	350	51	7.7	380AA
155/70R13	75	T	4.5J	157	548	387	853	300	44	7.7	380AA
150/80R13	79	T	4.5J	157	578	437	963	300	44	7.7	380AA
155/65R13	73	T	4.5J	157	532	368	805	300	44	7.7	380AA
165/70R13	79	T	5.00B	170	592	437	993	350	51	7.7	380AA
165/70R13 <small>max</small>	83	T	5.00B	170	592	487	1074	340	50	7.7	380AA
175/70R13	82	H	5.00B	177	578	478	1074	350	51	7.7	380AA
185/70R13	86	T	5.50B	189	590	530	1168	350	51	7.7	380AA
185/60R14	82	H	5.5J	189	578	478	1047	350	51	7.7	380AA
165/65R14	79	H	5J	170	570	437	963	350	51	7.7	380AA
175/65R14	82	H	5J	177	584	478	1047	380	51	7.7	380AA
185/65R14	86	H	5.5J	189	596	530	1168	350	51	7.7	380AA
165/70R14	81	T	5J	170	588	492	1079	350	51	7.7	380AA
165/70R14	85	T	5J	170	588	515	1135	340	50	7.7	380AA
175/70R14	84	T	5J	177	602	500	1102	350	51	7.7	380AA
185/70R14	88	T	5.5J	189	616	560	1235	350	51	7.7	380AA
195/70R14	91	T	6J	201	630	615	1368	350	51	7.7	
175/70R14C	91/93	B	5J	177	602	690/1435	1520/1435	375	54	8.0	380AA



WP16

SPECIAL FOR MIDDLE-END CAR



Silent pitch arrangement, tread design of unequal pitch width, arrangement and displacement help to provide experience of quiet driving and effectively reduce tire resonant noise.



Four wide longitudinal groove design and wide contact patch helps to deliver a high speed performance and excellent water drainage.



Wide central main rib design on tread center helps maintain a continuous and homolographic contact area for constant straight riding.



Use the leading method FEA, Evenly suffer the pressure, avoid uneven wear. Effectively reduce tyre resonant noise. Perfect high speed performance.

SIZE	Load Index	Speed Rating	Standard Rim	Section Width (mm)	Overall Diameter (mm)	Max. load		Max. pressure		Tread Depth (mm)	U.T.Q.B
						kg	lbs	kpa	psi		
205/60R14	86	H	6.0J	209	602	960	1235	300	44	7.9	420AA
195/60R14	86	H	6.0J	201	590	930	1168	350	51	7.9	420AA
205/70R14	92	T	6.0J	209	644	850	1433	300	44	7.9	420AA
185/60R15	84	H	6.5J	189	603	900	1102	350	51	7.9	420AA
195/60R15	88	V	6.0J	201	615	960	1235	350	51	7.9	420AA
205/60R15	91	H	6.0J	209	627	815	1356	350	51	7.9	420AA
185/65R15	88	H	6.5J	189	621	960	1235	350	51	7.9	420AA
195/65R15	91	H	6.0J	201	635	815	1356	350	51	7.9	420AA
195/65R15	95	H	6.0J	201	635	890	1521	340	50	7.9	420AA
205/65R15	94	H	6.0J	209	647	870	1477	350	51	7.9	420AA
215/60R15	94	H	6.5J	221	639	870	1477	350	51	7.9	420AA
215/65R15	95	H	6.5J	221	661	710	1565	350	51	7.9	420AA
205/70R15	96	T	6.0J	209	689	710	1565	300	44	7.9	420AA
215/70R15	95	T	6.5J	221	663	750	1653	300	44	7.9	420AA
205/55R16	91	V/W	6.5J	214	632	815	1356	350	51	7.9	420AA
205/60R16	92	H	6.0J	209	652	830	1389	350	51	7.9	420AA
205/60R16	95	H	6.0J	209	652	710	1565	340	50	7.9	420AA
215/60R16	95	H	6.5J	221	664	775	1708	340	50	7.9	420AA
225/60R16	98	V	6.5J	228	676	750	1653	350	51	7.9	420AA
215/65R16	95	H	6.5J	221	666	750	1653	350	51	7.9	420AA
205/65R16	95	H	6.0J	209	672	890	1521	300	44	7.9	420AA
235/60R16	100	H	7.0J	240	698	900	1764	300	44	7.9	420AA
225/60R17	95	H	6.5J	228	702	775	1708	350	51	7.9	420AA



WP17

ECONOMIC CAR TYRE



Four wider main grooves, much steel, improves wet grip on rainy days.



Shoulder reinforcing rib design to ensure handling performance as well as reducing noise.



Special for enabling high tire pressure and narrow tread design and low rolling resistance structure, reduce energy loss.



More reasonable crown radius design makes the tread contact ground pressure evenly distributed, prevents partial wear or other abnormal wear.

SIZE	Load Index	Speed Rating	Standard Rim	Section Width (mm)	Overall Diameter (mm)	Max. load		Max. pressure		Tread Depth (mm)	U.T.Q.G
						kg	lbs	kpa	psi		
175/70R13	82	T	5J	177	576	475	1047	300	44	7.2	440AA
185/60R14	82	H	5 1/2J	189	578	475	1047	300	44	7.2	440AA



WP18

SPECIAL FOR MIDDLE-END CAR



The closed shoulder seam reduces the impact noise of the tire and also prevents irregular wear.



Small decorative shoulder pattern designed to absorb vibration and reduce noise.



The reinforcing rib is designed to enhance the overall rigidity of the pattern to ensure high speed safety.



Through the noise simulation test, the groove distribution and groove Angle which are closely related to the pattern noise are adjusted reasonably, and the pattern noise is reduced.

SIZE	Load Index	Speed Rating	Standard Rim	Section Width (mm)	Overall Diameter (mm)	Max.load		Max.pressure		Tread Depth (mm)	U.T.Q.Q
						kg	lbs	kpa	psi		
165/60R15	84	H	5.5J	189	603	500	1102	300	44	7.9	420AA
185/60R15	88	H	5.5J	189	621	560	1235	300	44	7.9	420AA
• 195/55R15	85	H	6J	201	595	515	1138	300	44	7.9	420AA
195/60R15	88	V	6J	201	615	560	1235	300	44	7.9	420AA
195/60R15	91	H	6J	201	635	615	1356	300	44	7.9	420AA
205/60R15	94	H	6J	209	647	670	1477	300	44	7.9	420AA
• 195/60R16	89	H	6J	201	640	580	1279	300	44	7.9	420AA
235/60R16	100	V	7J	240	698	800	1764	300	44	7.9	420AA
205/50R16	91	V	6.5J	214	632	615	1356	300	44	7.9	420AA
205/60R16	92	H	6J	209	652	630	1389	300	44	7.9	420AA
215/55R16	97	W	7J	226	642	730	1608	340	49	7.9	420AA
215/60R16	95	H	6.5J	221	664	690	1521	300	44	7.9	420AA
215/60R16	98	H	6.5J	221	686	750	1654	300	44	7.9	420AA
225/55R16	95	W	7J	233	654	690	1521	300	44	7.9	420AA

• : under development



SUVLTR

WV11

SUV TYRE



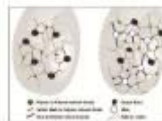
With 4-U-shaped groove design, the excellent water draining performance and gripping power on wet assured.



Multiple small tread pattern design improves driving comfort.



The big tread blocks on shoulder enhance tire strength so that the wear-resistance ability assured and uneven wearing avoided.



The silicon compounds also help reduce the friction between rubber molecules, energy loss, rolling resistance and enhance fuel economy.

SUVLTR

SIZE	Load Index	Speed Rating	Standard Rim	Section Width (mm)	Overall Diameter (mm)	Max. load		Max. pressure		Tread Depth (mm)	U.T.Q.Q
						kg	lbs	kpa	psi		
P215/70R16	100	T	6J	216	703	800	1764	300	44	8.5	440AA
P225/70R16	100	H	6.5J	228	897	800	1764	300	44	8.5	440AA
P225/75R16	102	T	6J	223	719	850	1874	300	44	8.5	440AA
P235/75R16	105	T	6.5J	235	730	920	2028	300	44	8.5	440AA
P225/70R16	103	H	6.5J	228	722	870	1929	350	51	8.5	440AA
P235/70R16	106	H	7J	240	736	950	2094	350	51	8.5	440AA
P245/70R16	107	H	7J	248	750	975	2164	350	51	8.5	440AA
P245/75R16	111	T	7J	248	774	1090	2403	350	51	8.5	440AA
P255/70R16	111	H	7.5J	260	764	1000	2403	350	51	8.5	440AA
P265/70R16	112	H	8J	272	778	1120	2469	350	51	8.5	440AA
P265/75R16	114	T	7.5J	267	804	1160	2601	350	51	8.5	440AA
P215/70R16	100	H	6.5J	221	708	800	1764	350	51	8.5	440AA
P235/65R17	104	H	7J	240	738	900	1984	350	51	8.5	440AA
P245/65R17	107	H	7J	248	750	975	2149	350	51	8.5	440AA
P265/65R17	112	H	8J	272	776	1120	2469	350	51	8.5	440AA
P265/70R17	115	H	8J	272	804	1215	2679	350	51	8.5	440AA
P245/70R17	110	H	7J	248	776	1060	2337	350	51	8.5	440AA
P235/60R18	107	H	7J	240	736	875	2149	340	50	8.5	540AA
P245/60R18	105	H	7J	248	751	825	2039	300	44	8.5	540AA
P265/55R18	105	H	8J	265	737	825	2039	300	44	8.5	540AA
P245/55R19	103	H	7.5J	253	753	875	1929	300	44	8.5	540AA
P255/55R19	107	H	8J	265	763	975	2149	300	44	8.5	540AA
P255/50R19	107	H	8J	265	739	875	2149	340	49	8.5	540AA
P275/55R20	117	V	8.5J	284	810	1285	2833	340	50	8.5	560AA
P275/45R20	110	V	8J	273	759	1000	2237	340	50	8.5	540AA
LT265/75R16	129/120	S	7.5J	267	804	1660/1400	3615/3086	550	80	10.5	
LT245/75R17	121/118	S	7.0J	248	800	1460/1300	3180/2910	550	80	10.5	
LT265/70R17	121/118	S	8.0J	272	804	1460/1320	3180/2910	550	80	10.5	

激活 Win
转到“设置”



SUVL-TR

WV11+

SUV TYRE



Adopt zigzag main groove design. Four zigzag wide longitudinal grooves improve the drainage and grasping performance in rainy days.



Adopt reinforcing rib design, reinforcing rib design increases the rigidity of the pattern block and has the function of cleaning stone.



The tread end adopts step design to increase the sidewall anti-scratch and anti-friction function.



Optimal design of grounding shape. The tread end adopts step design to increase the sidewall anti-scratch and anti-friction function.

SUVL-TR

SIZE	Load Index	Speed Rating	Standard Rim	Section Width (mm)	Overall Diameter (mm)	Max. load		Max. pressure		Tread Depth (mm)	U.T.Q.G
						kg	lbs	kpa	psi		
★ P215/60R17	104	V	7.5J	245	715	900	1964	340	49	8.5	540AA
P215/60R17	99	H	8.5J	221	712	775	1709	300	44	8.5	540AA
★ P235/55R18	104	H	8.5J	221	690	710	1556	300	44	8.5	540AA
P235/55R18	106	H	7J	240	763	950	2094	300	44	8.5	540AA
★ P255/70R18	118	H	8.0J	272	829	1250	2756	300	44	8.5	540AA
P255/60R18	118	H	8.5J	292	799	1250	2766	300	44	8.5	540AA
P265/60R18	110	H	8J	272	775	1060	2336	300	44	8.5	540AA
P235/55R19	101	V	7.5J	245	741	825	1819	300	44	8.5	540AA
P245/55R19	103	H	7.5J	253	753	875	1929	300	44	8.5	540AA
P225/55R19	99	V	7J	233	791	775	1709	300	44	8.5	540AA
P235/55R20	105	H	7.5J	245	766	925	2039	340	49	8.5	540AA
★ P245/45R20	103	V	8.0J	243	728	875	1929	340	49	8.5	540AA
P255/50R20	111	V	8.5J	277	774	1090	2403	340	49	8.5	540AA
P255/50R20	109	V	8J	265	764	1030	2271	340	49	8.5	540AA
P265/30R20	112	H	9J	297	794	1120	2469	300	44	8.5	540AA
★ P235/45R21	102	V	8.5J	255	763	850	1874	300	44	8.5	540AA
P275/45R21	110	V	9J	273	781	1060	2337	340	49	8.5	540AA
P275/40R22	107	V	9.5J	278	779	975	2150	340	49	8.5	540AA

★ : under development

激活 Winda
转到“设置”



SUVLTR

WH15

SUV TYRE



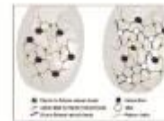
Variable pitch pattern ensures low resonance noise and outstanding riding comfort.



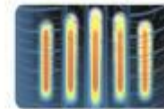
Continuous solid center rib providing stable contacting area enhance steering stability.



Four deepened circumferential tread grooves and open shoulder grooves provide excellent water evacuation performance and offer extraordinary behaviour on wet conditions.



Environmental low rolling resistant compound significantly reduce rolling resistance guarantee high fuel efficiency.



The optimized tire outline design provides stable and bigger contacting area, ensuring good handling performance.

SIZE	Load Index	Speed Rating	Standard Rim	Section Width (mm)	Overall Diameter (mm)	Max.load		Max.pressure		Tread Depth (mm)	U.T.Q.Q
						kg	lbs	kpa	psi		
225/65R17	102	H	6.5J	228	724	850	1875	300	44	9.5	540AA
235/65R17	104	H	7.0J	230	738	900	1985	300	44	8.5	540AA

SUVLTR

WINDA

SUV/LTR



WL16

ALL TERRAIN TYRE



Special Shoulder pattern block design, provide strong drive power and excellent off-road performance.



Special pattern design helps reduce profile creep strain on uneven road and strengthen contact patch lateral rigidity.



High-tensile steel wires plus nylon reinforced ply, excellent anti-piercing resistance.

SUV/LTR

SIZE	PR	Load Index	Speed Rating	Standard Rim	Section Width (mm)	Overall Diameter (mm)	Max.load		Max.pressure		Tread Depth (mm)
							kg	lbw	kpa	psi	
31*10.5R15LT	6	109	Q	8.5J	268	775	1030	2270	350	51	12.5
LT225/75R16	10	115/112	Q	6J	223	744	1215/1120	2690/2470	550	80	11.5
LT245/75R16	10	120/116	Q	7J	248	774	1400/1250	3065/2755	550	80	12.5
LT215/85R16	10	115/112	Q	6J	216	772	1215/1120	2680/2470	550	80	11.5
LT235/85R16	10	120/116	Q	8.5J	235	800	1400/1250	3065/2755	550	80	12.5

激活 Win
转到“设置”



SUVLTR

WA80+

ALL TERRAIN TYRE

	Comfort	<div style="width: 100%; height: 10px; background-color: #f4a460;"></div>
	High Mileage	<div style="width: 95%; height: 10px; background-color: #f4a460;"></div>
	Fuel Saving	<div style="width: 90%; height: 10px; background-color: #f4a460;"></div>
	Off Road	<div style="width: 85%; height: 10px; background-color: #f4a460;"></div>
	Silence	<div style="width: 80%; height: 10px; background-color: #f4a460;"></div>
	Wet Traction	<div style="width: 75%; height: 10px; background-color: #f4a460;"></div>



Deep pattern + High saturation in contact with the ground + mixed pattern design + Wear resistant compound, for much longer mileage



Special contour profile, 2% more contact area, improve the mileage and turning performance.



Special pattern design, avoid stone or other thing clamped in the grooves.



Perfect shape of ground contact, provide good wear-resisting property and stability.

SUVLTR

SIZE	PR	Load Index	Speed Rating	Standard Rim	Section Width (mm)	Overall Diameter (mm)	Max.load		Max.pressure		Tread Depth (mm)	U.T.Q.G
							kg	lbs	kpa	psi		
31*10.5R15LT	8	109	Q	8.5J	268	775	1030	2270	360	50	12.5	
LT215/75R15	8	100/97	S	8.0J	216	700	900/230	1765/1610	350	50	9.50	
LT235/75R15	8	104/101	Q	8.5J	235	735	900/825	1985/1820	350	50	11.5	
LT215/85R16	10	115/112	Q	8.0J	216	772	1215/1120	2690/2470	560	80	11.0	
LT235/85R16	10	120/116	Q	8.5J	235	806	1380/1290	3042/2778	560	80	12.5	
LT225/75R16	10	115/122	Q	8.0J	223	744	1215/1120	2690/2470	560	80	11.0	
LT245/75R16	10	120/116	Q	7.0J	248	774	1380/1290	3042/2778	560	80	12.5	
LT265/75R16	10	125/120	Q	7.5J	267	804	1550/1400	3415/3085	560	80	12.5	
LT285/75R16	8	122/119	Q	8.0J	286	834	1500/1380	3305/3000	450	65	12.8	
LT265/70R17	10	121/116	Q	8.0J	272	804	1450/1320	3195/2910	560	80	12.5	
LT275/65R18	10	123/120	Q	8.0J	270	815	1550/1400	3415/3085	560	80	12.8	
P215/70R16	100	S	8.5J	221	706	800	1764	300	44	9.6	540AA	
P255/70R16	111	S	7.5J	260	764	1090	2403	300	44	9.6	540AA	
P245/75R16	111	S	7.0J	248	774	1090	2403	300	44	9.6	540AA	
P235/70R16	106	S	7.0J	240	736	950	2094	300	44	9.6	540AA	
P265/70R16	112	S	8.0J	272	778	1120	2469	300	44	9.6	540AA	
P265/75R16	116	S	7.5J	267	804	1250	2756	300	44	9.6	540AA	
P265/70R17	116	S	8.0J	272	804	1215	2678	300	44	9.6	540AA	



HALUDR WM81

MUD TERRAIN TYRE



The balanced void ratio efficiently removes mud and dirt from the tread to provide continuous off-road traction.



The balanced void ratio efficiently removes mud and dirt from the tread to provide continuous off-road traction.



HALUDR mud terrain tire provide traction over various off-road terrain.



High-tensile steel wires plus nylon reinforced ply, excellent anti-piercing resistance.

SIZE	PR	Load Index	Speed Rating	Standard Rim	Section Width (mm)	Overall Diameter (mm)	Max. load		Max. pressure		Tread Depth (mm)
							kg	lbs	kpa	psi	
31*10.5R15LT	8	109	Q	8.5J	268	775	1030	2271	350	50	15
LT238/75R15	8	104/101	Q	8.5J	235	730	800	1965	350	50	15
LT245/75R16	10	120/116	Q	7J	248	774	1390	342	550	80	15
• LT265/75R16	10	120/117	Q	8.0J	272	776	1400	1265	550	80	15
• LT265/65R17	10	125/123	Q	8.0J	286	834	1700	1550	550	80	15
• LT265/70R17	10	121/118	Q	8.0J	272	804	1450	1320	550	80	15

• : under development



WL15

LIGHT TRUCK (VAN) TYRE



Three longitudinal "Z" groove design for excellent water drainage and good handling.



Special wear-resistant compound for much longer mileage, dramatically increase the economy.



Wide tread and strong carcass, improve the loading capacity and high speed performance

SIZE	PR	Load Index	Speed Rating	Standard Rim	Section Width (mm)	Overall Diameter (mm)	Max.load		Max.pressure		Tread Depth (mm)
							kg	lbs	kpa	psi	
185R14C	8	102/100	S	5.5J	188	650	850/800	1875/1765	475	69	9.5
190R14C	8	100/104	S	5.5J	190	606	930/900	2085/1985	475	69	9.5



WRO1

LIGHT TRUCK (VAN) TYRE



Three longitudinal "S" saw teeth groove design for excellent water drainage and good handling.



Deep pattern + High saturation in contact with the ground + mixed pattern design + Wear resistant compound, for much longer mileage.



Mixed pattern design for Shoulder, effectively reduce noise.

SIZE	PR	Load Index	Speed Rating	Standard Rim	Section Width (mm)	Overall Diameter (mm)	Max.load		Max.pressure		Tread Depth (mm)
							kg	lbs	kpa	psi	
165R14C	8	87/95	S	4.5J	167	622	730/690	1600/1521	450	65	9.5
175/75R14C	8	93/98	S	5.0J	177	618	775/750	1700/1653	475	69	9.5
185R14C	8	102/100	R	5.5J	188	650	850/800	1857/1765	450	65	9.5
195R14C ^{new}	8	105/104	R	5.5J	198	666	950/900	2095/1985	450	66	9.5
205R14C	8	109/107	R	6.0J	208	686	1000/975	2270/2150	450	66	9.8
185R15C	8	103/102	R	5.5J	188	674	875/850	1930/1875	450	65	9.8
• 215/75R14C	8	112/110	R	6.0J	216	678	1120/1060	2470/2335	475	69	9.5
195R15C ^{new}	8	109/104	R	5.5J	198	693	950/900	2095/1985	450	66	10.0
190/70R15C	8	104/102	R	6.0J	201	655	900/850	1985/1875	450	65	9.5
205/70R15C	8	105/104	R	6.0J	209	669	950/900	2095/1985	450	65	9.5
215/70R15C	8	104/101	S	6.5J	221	683	900/825	1964/1819	450	65	9.5
• 225/70R15C	8	112/110	R	6.5J	228	697	1120/1060	2470/2335	450	69	9.5
• 235/65R16C	8	115/113	R	7.0J	240	712	1215/1150	2690/2540	475	69	9.5
• 215/65R16C	8	109/107	R	6.5J	221	686	1000/975	2270/2150	475	69	9.5
• 205/65R16C	8	107/105	R	6.0J	209	672	975/925	2150/2040	475	68	9.5
• 195/65R16C	8	104/102	R	6.0J	201	660	900/850	1985/1875	475	68	9.5
• 225/65R16C	8	112/110	R	6.5J	228	695	1120/1060	2470/2335	475	69	9.5
185/75R16C	8	104/102	R	5.0J	184	681	900/850	1985/1875	475	69	9.5
195/75R16C	8	107/105	R	5.5J	196	696	975/925	2150/2042	475	69	9.5
215/75R16C	8	113/111	R	6.0J	216	728	1150/1090	2535/2405	475	69	9.8

• : under development



WL11

SPORT TRAILER (ST) TYRE

STR



All sipes for anti-slipping function enhance tire performance in starting acceleration and braking.



Wide tead design helps optimize contact patch shape, uniform tire contact patch pressure.



Specially treated shoulder profile helps reduce heating up on the shoulder.

SIZE	PR	Load Index	Speed Rating	Standard Rim	Section Width (mm)	Overall Diameter (mm)	Max. load		Max. pressure		Tread Depth (mm)
							kg	lbs	kpa	psi	
ST205/75R14	6	100/96	L	5.5J	203	664	800/710	1780/1570	350	50	8
ST205/75R14	8	105/101	L	5.5J	203	664	825/825	2040/1820	450	65	8
ST205/75R15	6	101/97	L	5.5J	203	680	825/730	1820/1610	350	50	8
ST205/75R15	8	107/100	L	5.5J	203	680	975/850	2190/1870	450	65	8
ST225/75R15	8	113/108	L	6J	223	719	1150/1000	2540/2200	450	65	8
ST225/75R15	10	117/112	L	6J	223	719	1285/1120	2830/2470	550	80	8
ST235/80R16	10	124/120	L	6.5J	235	782	1600/1400	3520/3080	550	80	8

STR



IS66

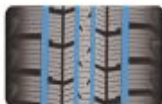
WINTER TYRE

	Comfort
	High Mileage
	Fuel Saving
	Winter
	Silence
	Wet Traction

WINTER



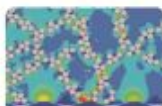
Special pattern design with high density jag sipes make sure the good grip and brake performance on snow or ice covered road.



Four longitudinal grooves design for excellent water drainage and good handling.



Apply for the computer and gene combination simulation design, have the best pattern noise combination, improve vehicle comfort.



Special snow tyre compound and structure design.

SIZE	Load Index	Speed Rating	Standard Rim	Section Width (mm)	Overall Diameter (mm)	Max. Load		Max. pressure		Tread Depth (mm)
						kg	lbs	kpa	psi	
165/70R13	79	Q	5.00B	170	562	437	963	350	51	8.0
165/65R13	73	Q	4.50B	167	532	365	804	300	44	8.8
175/70R13	82	Q	5.00B	177	576	475	1047	300	44	8.8
175/70R14	84	Q	5.0J	177	602	500	1102	300	44	9.0
185/60R14	82	Q	5.5J	189	578	475	1047	350	51	8.0
195/60R14	86	Q	6J	201	590	530	1168	350	51	8.0
165/60R14	75	S	5.0J	170	554	387	853	300	44	8.8
185/70R14	86	S	5.5J	189	616	580	1294	300	44	8.0
175/65R14	82	Q	5J	177	584	475	1047	300	44	8.8
185/65R14	86	S	5.5J	189	595	530	1198	300	44	9.0
185/65R15	88	Q	5.5J	189	621	580	1295	350	51	8.0
195/65R15	91	Q	6J	201	635	615	1356	350	51	8.0
195/60R15	88	Q	6J	201	615	560	1235	350	51	8.0
195/55R15	85	Q	6J	201	595	515	1135	350	51	8.0
195/70R15C	104/102	Q	6J	201	655	900/850	1985/1875	450	66	10
215/75R15	100	Q	6J	215	703	600	1764	300	44	9.0
185/60R15	84	S	5.5J	189	603	500	1102	300	44	9.0
205/65R15	94	S	6J	209	647	670	1477	300	44	9.0
175/65R15	84	Q	5J	177	609	500	1102	300	44	8.8
205/55R16	91	Q	6.5J	214	632	615	1356	350	51	8.0
215/60R16	95	Q	6.5J	221	664	690	1521	300	44	9.0
205/60R16	92	S	6J	209	652	630	1388	300	44	9.0
215/55R16	93	S	7J	225	642	650	1433	300	44	8.0
195/60R16	89	S	6J	201	640	580	1278	300	44	9.0
215/70R16	100	S	6.5J	221	706	900	1764	300	44	6.0
225/70R16	103	S	6.5J	228	722	875	1929	300	44	9.0
225/65R17	102	Q	6.5J	228	724	850	1874	300	44	9.0
215/60R17	95	S	6.5J	221	690	710	1567	300	44	9.0
205/65R17	112	S	8J	272	776	1120	2471	300	44	9.2
235/60R18	103	Q	7J	240	739	875	1929	300	44	9.0

WINTER

激活 Win
转到“设置”以

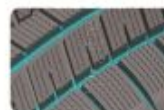


IS68

WINTER TYRE



Special pattern design with high density sawtooth lateral groove, make sure excellent grip and brake performance on snow or ice covered road.



Wider pattern design on inner side of shoulder to achieve better traction on snow road.



With hundreds of tiny grooves on the tread, fabulous ability to absorb water to refrain aquaplaning.



Brand new 3D pattern designing, 20% more space inside of the groove, enhanced mutual support between pattern blocks, better grip performance.

SIZE	Load Index	Speed Rating	Standard Rim	Section Width (mm)	Overall Diameter (mm)	Max. load		Max. pressure		Tread Depth (mm)
						kg	lbs	kpa	psi	
* 205/55R16	95	T	6.0J	209	672	690	1521	300	44	8.5
225/55R16	95	T	7.1J	233	664	690	1521	300	44	8.5
225/55R17	97	H	7.1J	233	680	730	1609	300	44	8.5
215/50R17	95	H	7.1J	226	684	690	1521	340	49	8.5
225/45R17	94	H	7.5J	225	694	670	1477	340	49	8.5
215/55R17	94	T	7.1J	226	668	670	1477	300	44	8.5
225/50R17	94	T	7.1J	233	658	670	1477	300	44	8.5
235/45R17	97	S	8J	236	644	730	1609	340	49	8.5
235/55R17	99	S	7.5J	245	690	775	1708	300	44	8.5
205/50R17	93	H	6.5J	214	638	650	1433	340	49	8.5
215/45R17	91	H	7.0J	213	626	615	1356	340	49	8.5
* 205/55R17	95	T	6.5J	214	668	690	1521	340	49	8.5
* 225/40R18	92	H	8.0J	230	637	630	1389	340	49	8.5
* 215/50R18	92	T	7.0J	226	673	630	1389	300	44	8.5
* 255/45R18	103	T	8.5J	255	713	875	1929	340	49	8.5
235/55R18	100	H	7.5J	245	715	800	1764	300	44	8.5
215/55R18	99	H	7.1J	226	693	775	1708	340	49	8.5
235/45R18	98	T	8J	236	689	750	1653	340	49	8.5
235/50R18	101	H	7.5J	245	693	825	1819	340	49	8.5
245/45R18	96	S	8J	243	677	710	1566	300	44	8.5
255/40R18	99	S	9J	260	661	775	1709	340	49	8.5
245/50R18	104	H	7.5J	253	703	900	1984	340	49	8.5
225/45R18	95	H	7.5J	225	659	690	1521	340	49	8.5
225/50R18	99	H	7.1J	233	683	775	1709	340	49	8.5
245/40R18	97	H	8.5J	248	653	730	1609	340	49	8.5

* : under development

WINTER

激活 Wi
转到“设置”



IS69

WINTER TYRE

	Comfort	<div style="width: 100%; height: 10px; background-color: #f4a460;"></div>
	High Mileage	<div style="width: 90%; height: 10px; background-color: #f4a460;"></div>
	Fuel Saving	<div style="width: 80%; height: 10px; background-color: #f4a460;"></div>
	Winter	<div style="width: 100%; height: 10px; background-color: #f4a460;"></div>
	Silence	<div style="width: 95%; height: 10px; background-color: #f4a460;"></div>
	Wet Traction	<div style="width: 90%; height: 10px; background-color: #f4a460;"></div>

WINTER



Multiple combination of pattern groove designing, enhance grip ability, safeguard the driving in winter.



Special pattern design with high density sawtooth lateral groove, make sure excellent grip and brake performance on snow or ice covered road.



Brand new 3D pattern designing, 20% more space inside of the groove, enhanced mutual support between pattern blocks, better grip performance.

SIZE	Load Index	Speed Rating	Standard Rim	Section Width (mm)	Overall Diameter (mm)	Max. load		Max. pressure		Tread Depth (mm)
						kg	lbs	kpa	psi	
* 265/70R16	112	T	8.0J	225	665	710	1595	340	49	10.5
215/65R16	98	S	6.5J	221	685	750	1653	300	44	10
235/70R16	106	S	7J	240	738	950	2094	300	44	10.5
225/60R17	99	S	6.5J	228	702	775	1709	300	44	10
235/60R17	104	T	7J	240	738	900	1994	300	44	10
245/60R17	107	S	7J	248	750	975	2149	300	44	10.5
215/65R17	99	T	6.5J	221	712	775	1709	300	44	10
225/55R18	98	S	7J	233	705	750	1653	300	44	10
225/60R18	100	S	6.5J	228	727	800	1784	300	44	10
245/60R18	105	T	7J	248	751	925	2039	300	44	10.5
265/60R18	110	R	8J	272	775	1060	2337	300	44	10.5
235/60R18	106	T	7J	240	763	950	2094	300	44	10.5
* 255/60R18	112	T	7.5J	260	763	1120	2489	340	49	10.5
* 225/45R19	96	T	7.5J	225	685	710	1595	340	49	10.5
225/50R19	99	T	7J	233	731	775	1709	300	44	10
245/50R19	103	R	7.5J	253	753	875	1929	300	44	10.5
235/50R19	99	T	7.5J	245	719	775	1708	300	44	10
245/45R19	102	T	8J	243	703	850	1874	340	49	10.5
255/50R19	107	T	8J	265	763	975	2150	300	44	10.5
255/45R19	100	T	8.5J	255	713	800	1784	300	44	10.5
275/40R19	105	T	9.5J	278	703	925	2039	340	49	10.5
265/50R19	110	T	8.5J	277	749	1060	2337	340	49	10.5
235/55R19	101	T	7.5J	245	741	825	1819	300	44	10.5
255/40R19	100	T	9J	260	687	800	1784	340	49	10.5
275/45R20	106	S	9J	273	756	950	2094	300	44	10.5
235/60R20	102	T	7.5J	245	766	850	1874	300	44	10
245/50R20	102	T	7.5J	253	754	850	1874	300	44	10.5
255/50R20	109	S	8J	265	764	1030	2271	340	49	10.5
275/50R20	117	S	8.5J	284	810	1285	2833	340	49	10.5
285/50R20	112	S	9J	297	794	1120	2489	300	44	10.5
245/45R20	103	T	8J	243	728	875	1929	340	49	10.5
275/45R21	110	T	9J	273	761	1060	2337	340	49	10
255/45R21	105	T	8.5J	255	763	925	2039	340	49	10.5
275/40R22	107	T	9.5J	278	779	975	2149	340	49	10.5

* : Under development

WINTER

激活 Win
转到“设置”以

TYRE SIZE KNOWLEDGE

205/55 R 16 91 W

① ② ③ ④ ⑤ ⑥

① Nominal Section Width (mm)

④ Nominal Rim Diameter in Inches

② Nominal Aspect Ratio as a Percentage

⑤ Load Index

Aspect ratio(%) = $\frac{\text{Section Height}}{\text{Section Width}} \times 100$

⑥ Speed Symbol

③ Radial Construction



SIDEWALL KNOWLEDGE



SPEED RATING

Speed Rating	Max. Kph
M	130KM/H
N	140KM/H
P	150KM/H
S	180KM/H
T	190KM/H

Speed Rating	Max. Kph
H	210KM/H
V	240KM/H
W	270KM/H
Y	300KM/H
Z	240KM/H+

TYRE UPGRADE

Tyre Upgrade means: increase of rim diameter without changing of tyre overall diameter, the trend in development of low aspect ratio is called upgrade



Please refer to the clarifications set forth below to upgrade the tyre:

Without any particular reason, please do not change the overall diameter of tyre easily. The alternation of tyre overall diameter will cause misreading of speedometer or mutual interference between tyre and other parts of vehicle.

Please determine the width of tyre in accordance with the specific width of vehicle. If the width of the entire tyre is increased overly, it will cause mutual interference between tyre and other parts of vehicle, even heading out of the tyre from bodywork which will initiate danger.

Notice the load index of vehicle when you upgrade the tyre. there is rule to the weight which the tyre bear (load index) for each size. Please refer to the load index when you chose the proper size.

TYRE ROTATION

The purpose for rotating tyres is to achieve a more uniform wear for all tyres on a vehicle. Before rotating tyres, determine the cause of any unusual wear and correct any misalignment, imbalance, or other mechanical problems.

Otherwise it will cause: 1. Ride disturbing; 2. More noise; 3. Poor ride comfort; 4. Shorter of life span.



Front Wheel Drive



Rear Wheel Drive



4 Tyre Rotation